

Specifications

Document Centre 506/606/706

Output Speed - Printing & Copying

| | DC 506 | DC 606 | DC 706 |
|----------|--------|--------|--------|
| A4 (LEF) | 50 ipm | 60 ipm | 70 ipm |
| A3 | 28 ipm | 30 ipm | 35 ipm |

Network Printing

| | |
|----------------------|--|
| Processor | Power PC 200 Mhz. |
| Memory (Standard) | DC 506 32 MB, DC 606/706 96 MB |
| Hard Disk (Standard) | 32 GB |
| Interface | 100Base-T/10Base-T, Token Ring (optional) |
| Printer Languages | PCL5e/6 [®] , Postscript [®] 3, PDF |
| Resolution | 600 x 600 dpi plus Edge Enhancement to 2,400 x 2,400 dpi |
| Operating Systems | Windows [®] 95, 98, Me, NT 4.0, 2000, Mac, Unix Filter, |
| Protocols | SPX/IPX, TCP/IP, Apple Talk, SMB, IPP |

Copying

| | |
|-------------------------------------|---|
| FCOT | 3 seconds or less |
| Resolution / Halftone | 600 x 600 dpi plus Edge Enhancement mode 2,400 x 2,400 dpi / 256 levels |
| Reduction/Enlargement | 25% to 400% (1% increments) |
| Quantity | 1 to 999 |
| Internal Copy Auditor | Standard (300 users) |
| Foreign Device Interface (optional) | Interface to 3 rd Party access control devices |

Network Scanning (optional)

| | |
|-------------------------------------|--|
| Input Speed | 75 sheets / min (A4) |
| Resolutions / Halftone | 600 dpi, 400 dpi, 300 dpi, 200 dpi / Error Diffusion |
| Maximum Scan Area | Up to A3 |
| Network Protocol (Network Scanning) | TCP/IP |
| Scan Destinations | Scan to server |

Paper Handling - DADF

| | |
|--------------------|--|
| Capacity | 50 Sheets |
| Paper Sizes Sensed | A5 - A3 |
| Weights | Simplex - 55 to 220 gsm Duplex - 50 to 105 gsm |

Paper Handling - Tray 1

| | |
|--------------------|---------------|
| Capacity | 1000 Sheets |
| Paper Sizes Sensed | A5 - A4 |
| Weights | 60 to 128 gsm |

Paper Handling - Tray 2 (Multi-Tray)

| | |
|-------------|--|
| Capacity | 3 Subtrays 100 sheets each |
| Paper Sizes | Subtray 1 - A5 to A4 Subtray 2 - A5 to A4 Subtray 3 - A5 to A3 |
| Weights | 56 - 220 gsm |

Paper Handling - Trays 3 & 4

| | |
|-------------|------------------------|
| Capacity | 550 sheets (each tray) |
| Paper Sizes | A5 to A3 |
| Weights | 56 to 128 gsm |

Paper Handling - High Capacity Feeder (Standard on DC706)

| | |
|-------------|--------------|
| Capacity | 3,600 sheets |
| Paper Sizes | B5 to A4 |
| Weights | 56 - 128 gsm |

Paper Handling - Bypass Tray

| | |
|-------------|--|
| Capacity | 50 sheets |
| Paper Sizes | A6 to A3. Also Non standard sizes (Y:100 - 300mm, X:148 - 432) |
| Weights | 56 - 220 gsm |

General

| | |
|-----------------------------|---|
| Electrical Requirements | 220-240V, 10A |
| Power Consumption | Sleep Mode 5 - 19 watts Running 1,600 watts |
| Warm up | Less than 180 seconds |
| Dimensions | Standard Configuration with ADF / DADF 620 x 778 x 1080 mm (W x D x H) |
| Weight | 190 kgs or less |
| Toner Yield (per cartridge) | 28,000 |
| Drum Yield | 130,000 |

Finisher (Standard - DC606 / DC706, Optional - DC605)

| | |
|--|--|
| Capacity | Tray 1: 500 sheets Tray 2: 1,500 sheets |
| Paper Sizes (Stapled / Sorted / Stacked) | A6* - A3 |
| Paper Sizes (Punched) | B5 - A3 |
| Weights | 56 to 220 gsm |
| Staple Capacity | 50 sheets |
| Staple Positions | Top Angle, Dual Straight |
| Staple Cartridge | 5,000 staples per refill |

*Offset sorting not available for A6, B6 and A5 paper sizes

For detailed product specifications, optimum performance parameters & service clearances refer to Product Customer Expectation Document.

Document Centre 506/606/706



technology that puts
 you in charge.



13 14 12

www.fujixerox.com.au

Fuji Xerox Australia Pty Ltd. ABN 63 000 341 819. Australian Head Office: 101 Waterloo Rd, North Ryde NSW 2113. Phone (02) 9856 5000 Fax (02) 9856 5003

©2004 Fuji Xerox, Xerox, The Document Company, the stylised X, Document Centre are registered trademarks/trademarks of Fuji Xerox or its associated companies. Other trademarks are the property of their respected owners. Whilst the information is correct at the time of printing, Fuji Xerox Australia Pty Ltd reserves the right to change the specifications or withdraw supply of the equipment/software described herein without notice. Quality Endorsed Company ISO 9001:2000. QEC1950/01 SAI Global, Certified Environmental Management ISO 14001:1996. C10094 SAI Global. Printed in Australia, November 2004.

unsurpassed multi-function technology... taking you further

"Mobility" is the key word in today's work environment. If you are not mobile, you are not up to speed. That's why the Fuji Xerox Document Centre 506/606/706 comes equipped with technologies that move with you.

Embedded Web Server and Internet Protocol Printing (IPP)

Remote printing capability via IPP

IPP allows you or your counterpart from another company to print to the DC506/606/706 from any location via the internet. For instance, you can submit reports to the office without being physically present. This eliminates the usual fax process as documents can be printed directly with the IPP function. The result – increased productivity, output quality and cost efficiency.

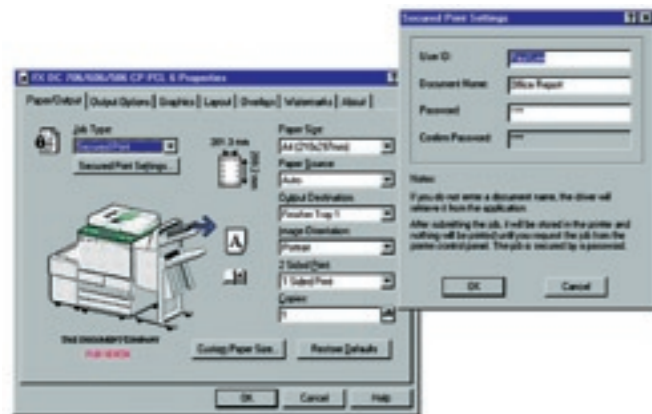
Embedded Web Server (EWS)

Through the EWS, print jobs and run status can be monitored by each client through browsers, such as Netscape Navigator and Internet Explorer. This helps Network Administrators to understand and support your printing needs more effectively.



Secure Print

Security of confidential documents is a big concern in a networked printer environment. This feature therefore offers peace of mind by utilising a password for printing confidential documents.



Sample Print

This is a simple solution to control wastage and printing costs especially for bulk printing. It allows you to print just one set of documents for checking before proceeding to complete the print job.

Speedy Office Solution

With an increasingly demanding work environment, you also need an office output system that is up to speed. The DC506/606/706 is the ideal solution to improve productivity without compromising on quality and reliability.

High Speed Network Printing

- Equipped with a Power PC 200MHz CPU, 96 MB RAM (DC606/706), 32 MB RAM (DC506) and a HDD capacity of 12 GB to enhance printing capability.
- Print speeds of 50ipm, 60ipm and 70ipm support departmental and enterprise printing needs.
- Duplex printing at rated speed and output document up to A3 size are revolutionary and unmatched features.
- High speed transmission through 100Base-TX improves printing efficiency.

High Speed Scanning

- Fast scanning speed of up to 75 sheets / min enhances the conversion of paper documents to digital format.
- Scanning at Text, Halftone and Halftone / Text modes to suit various document needs.
- Versatile Duplex scanning up to A3 size.

High Speed Copying

- FCOT (First Copy Out Time) of 2.7 sec boosts productivity since one-off copying contributes to the bulk of total office copying jobs.
- Copying speeds of 50ipm, 60ipm and 70ipm fulfill all your office copying needs.
- High speed duplex printing at rated speed and up to 70ipm enhances the output efficiency.
- S-SPIRE technology enables the user to reproduce a copy of similar quality to the original with the 9 micron toner and highly sensitive photoreceptor drum.
- High image quality of 600 x 600 dpi at 256 tones ensures high image quality.

High Productivity

- High paper supply of up to 6050 sheets (with High Capacity Feeder) allows uninterrupted document production.
- Multi-tray feeder holds three different media (e.g. OHP film, colour stock or heavy stock) enabling users to print on different media at any one time.



The Fuji Xerox Document Centre 506/606/706 is at the heart of the total document flow in the office. It's the superior design and technology, brings convenience at your fingertips.

Document Centre 506/606/706

Modularity

The Fuji Xerox Document Centre 506/606/706 is a space saving modular system that gives you the flexibility of protecting your investments and ensures that the system grows with your office needs. It can be a stand-alone copier or a fully networked document portal that is capable of high volume printing, scanning and copying. You can add the following options to suit your growing document needs:

- Printer / Scanner kit.
- High Capacity Feeder to handle high-volume printing and copying. (DC706 comes standard with a HCF).
- Finisher with puncher enables efficient mass processing and output management. (Option only for DC506. DC606 & DC706 have a finisher as a standard accessory)



User Friendly

At the heart of it all, the Fuji Xerox Document Centre 506/606/706 is designed to ensure ease of use while maximising productivity and saving time.

- Customised LCD screen allows you to configure up to 8 most frequently used functions so that you need not waste time going through multiple screens to execute a job.
- Easy-to-use printer driver dialogue box enables you to print and do automatic sorting, inserting of 'covers', booklet printing, watermark printing, stapling, punching. A host of other features can be accessed from your desktop with a click of your mouse.

Environmentally friendly

The Fuji Xerox Document Centre 506/606/706 is equipped with numerous eco-friendly features.

- Recyclable main components and consumables prevent depletion of natural resources.
- Low noise ensures an extremely quiet operation and prevents noise pollution.
- The air discharge from the machine is directed towards the floor, which ensures maximum safety and minimal discomfort in your work environment.
- Energy Star certification results in energy savings.



Print



Copy



Scan



Online Stapler